

Trauma among Women Substance Users & Implications for Services

Hello!

I am Aoife Dermody



Quality Matters

supporting improvement in social services

Overview



- ▣ Why we did this research
- ▣ What we found in relation to women service users and trauma
- ▣ What this means for services in Limerick and nationally

1.

Why This Research?

Background
and Context

Interagency Group Working with Women Substance Users



8- 9% adult women

Survivors of severe abuse in adulthood

$\frac{2}{3}$ in treatment

Childhood abuse survivors

“The relationship between substance use and domestic violence, domestic violence and homelessness, homelessness and incarceration, and how these impact in a particular way on women due to the gendered nature of violence in the home has been well documented”

ABUSE



Physical



Emotional



Sexual

NEGLECT



Physical



Emotional

HOUSEHOLD DYSFUNCTION



Mental Illness



Incarcerated Relative



Mother treated violently



Substance Abuse



Divorce

Source: Centers for Disease Control and Prevention

Credit: Robert Wood Johnson Foundation

Methodology



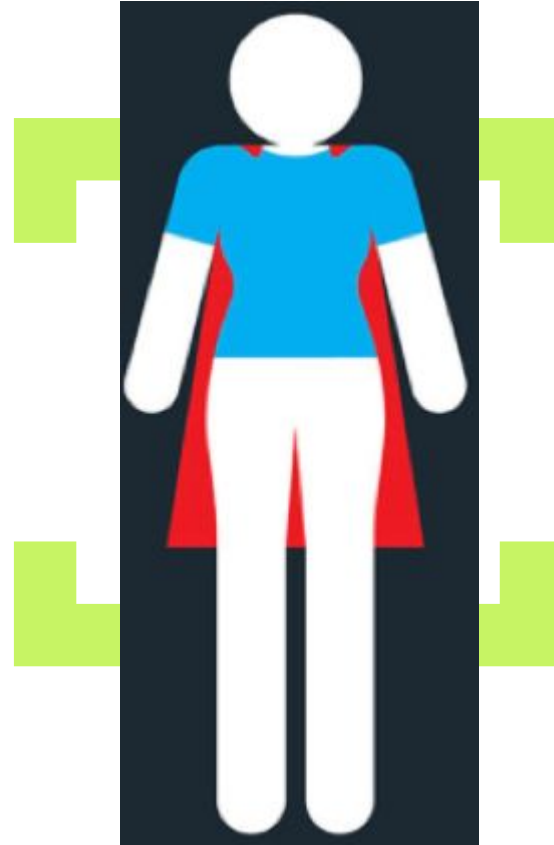
The Women

24

Average age 35

Settled and Traveller women

All Irish



Adverse Childhood Experiences

| | General Population (19,36) | Women in this study | Difference in Frequency of experiences |
|--------------------------------|-------------------------------|---------------------|--|
| Have at least one ACE | 59 – 64% | 96% | + 1.5 x |
| Women with five or more ACEs | 9% | 57% | + 6 x |
| Men with five or more ACEs | 7% | | + 8 x |
| Sexual abuse of women | 17% | 42% | + 2.4 x |
| Sexual abuse of men | 7% | | + 6 x |
| Household substance abuse | 29% | 74% | + 2.6 x |
| Verbal abuse | 26% | 56% | + 2 x |
| Physical abuse | 15% | 39% | + 2.6 x |
| Incarcerated family member | 7% | 52% | + 7 x |
| Mentally ill household member | 19% | 52% | + 7 x |
| Household substance misuse | 29% | 74% | + 2.5 x |
| Parental separation or divorce | 27% | 22% | - |

Impact in Adulthood of Childhood Trauma

65%

Substance Use was related to Trauma

30%

Substance Use was somewhat related to trauma

92%

Experienced intimate partner violence in adulthood

Implications for Services



**Resilience and
Capacity for
Feedback and
Engagement**



**Potential Trauma
Profile of Women
Using Services
Nationally**

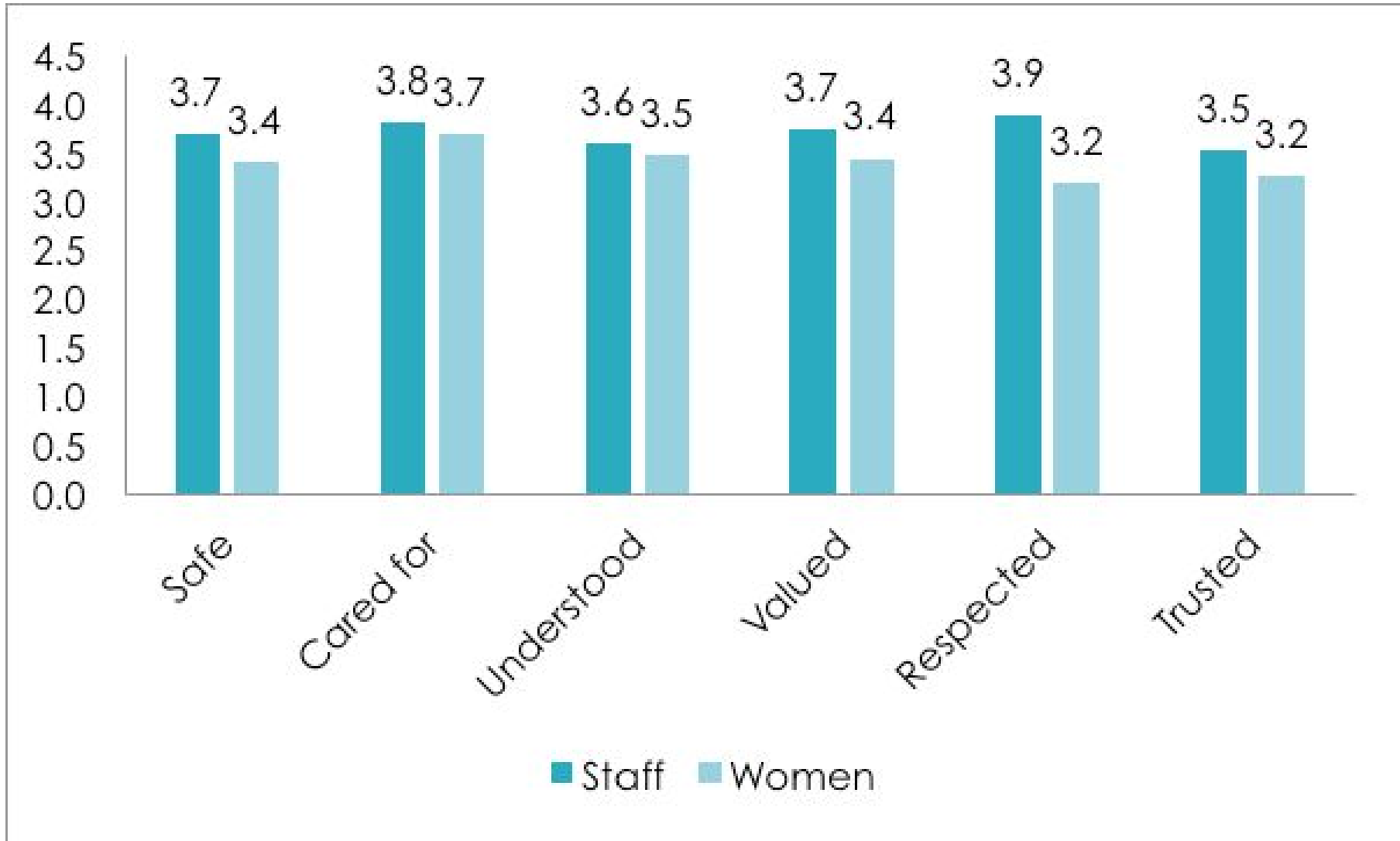


**Need to Consider
Particular Impact of
Trauma on Service
Access and
Experience**



“There is a need to turn the scrutiny and exploratory drive of this research inwards towards organisations themselves and the systems in which they operate. This will include consideration as to whether current structures are likely to support someone to move from trauma, or whether they may in fact re-traumatise and further inhibit progress”.

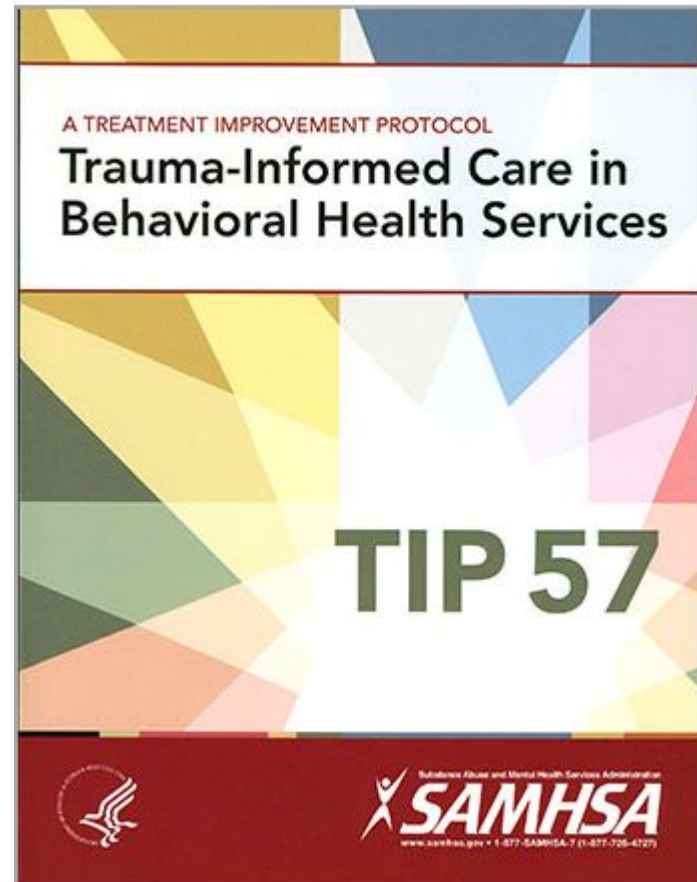
Staff and Women's Rating of Trauma Principals in Services



What Can Services Do?

Trauma Specific Services

Trauma Informed Services



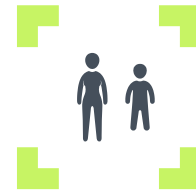
What Now for Limerick?



Develop a Trauma Informed Women's Drug and Alcohol Service



Develop a Regional Trauma Informed Care Standard



Interagency childcare Working Group

Thanks!

aoife@qualitymatters.ie

